

OUTDOOR LIVING COLLECTION

Create your dream outdoor living space with
our garden rooms, pergolas and verandas



eurocell[®]



CONTENTS

GARDEN ROOMS, PERGOLAS & VERANDAS DESIGNED AROUND YOU	4
THE EUROCELL DIFFERENCE	8
HOW TO ORDER	9
SUSTAINABILITY	10
OUR RANGE	12
GARDEN ROOMS	16
PERGOLAS	30
VERANDAS	34
DESIGN YOUR BESPOKE LIVING SPACE	38
GARDEN ROOMS	40
PERGOLAS	48
VERANDAS	50
RANGE COMPARISON GUIDE	52
USEFUL INFORMATION	
CHOOSING THE PERFECT PLACE	54
PLANNING PERMISSION	55
FOUNDATIONS	55
GARDEN ROOMS, PERGOLAS & VERANDAS IN FIVE EASY STEPS	56
DESIGN GRID & CHECKLIST	58

Enjoy your garden more

Your garden is an extension of your home. But when you can't use it in bad weather or after dark, it can feel like wasted space. Adding a garden room, pergola or veranda can change that. Explore our outdoor living collection and start dreaming about what you could be doing in your new space.

Simply call us on **0333 005 6525**, email us at **enquiries@eurocell.co.uk** or visit **eurocell.co.uk/gardenrooms** to make an enquiry today.

Our friendly call centre advisors are here to help Monday - Friday: 8:30am to 5:00pm

DISCOVER...

GARDEN ROOMS, PERGOLAS & VERANDAS DESIGNED AROUND YOU

We all know being in nature helps to improve wellbeing. So, when you need somewhere to retreat, there's no better place to go than your garden. But that's all well and good... if it isn't raining, cold or dark! That's where a garden room, pergola or veranda can help.

A garden room is the ideal place to work, relax, exercise or create. And, as all our garden rooms have electrics and lighting, you can use them all year round. Pergolas and verandas are also an excellent solution. They provide shade in the height of summer or shelter on a rainy day.

Stop imagining and start planning...

Our range of garden rooms, pergolas and verandas will increase your living space, enhance your lifestyle, and add tremendous value to your home. They're built to the highest standards and offer exceptional value for money. And we have a wide range of sizes and customisable options so you can create a space to suit your needs.



AN OUTDOOR LIVING SPACE TO COMPLEMENT YOUR HOME

Creating a garden room, pergola or veranda that enhances your lifestyle is essential. That's why we offer a range of customisable options that allow you to personalise your building to suit your needs.

Our buildings are designed to blend into their surroundings, making them a beautiful addition to your garden. And they meet UK building regulations, so planning permission isn't usually needed*.

Let us inspire you

Browse this brochure to see our ranges and get some inspiration. And don't forget, we're on-hand to take you through the process every step of the way.

Simply call us on **0333 005 6525**, email us at enquiries@eurocell.co.uk or visit eurocell.co.uk/gardenrooms to make an enquiry.

We'll chat through your needs and arrange a time to carry out a home survey. We'll then send you your bespoke design and quote. And if you'd like to go ahead, we'll arrange a convenient time to fit.

*See page 55 for more information.



THE EUROCELL DIFFERENCE

TRUST US TO DELIVER YOUR DREAM OUTDOOR LIVING SPACE



Here at Eurocell, we believe making improvements to your home should be easy. And you shouldn't have to break the bank to do them either. That's why we've worked tirelessly for years to produce premium-quality products that offer excellent value for money.

Our extensive garden room, pergola and veranda ranges have been carefully designed to give you

choice and flexibility. They've been built to the latest standards, using the best technology and come with lengthy guarantees.

We use an average of 30% end-of-life recycled frames in all our window and door systems. And we're on hand with help and advice whenever you need it.



Trusted by the trade for over 45 years

A UK leading manufacturer, distributor and recycler of building products.



Surveyed and fitted by our approved installers

Our network of carefully selected approved installers work across the UK.



Experts with years of experience

Our team are here to help you every step of the way



Made and recycled in the UK

We recycle around 3 million window and conservatory frames each year and use some of that material to manufacture your new frames.



Energy efficient construction

Our garden rooms have double-glazed glass and high-quality insulation to retain heat.



Guaranteed for your peace of mind

There's a 10 or 15 year guarantee on garden rooms and a 5 year guarantee on pergolas and verandas.

HOW TO ORDER YOUR BESPOKE OUTDOOR LIVING SPACE

Buying a garden room, pergola or veranda is easy with Eurocell. Simply:

1. Call us on **0333 005 6252**, email enquiries@eurocell.co.uk or go to eurocell.co.uk/gardenrooms to make an enquiry
2. We'll contact you to discuss your needs
3. One of our dedicated advisors will survey your home
4. We'll send you a bespoke design and quote
5. We'll arrange a convenient time for installation

15
years

15 year guarantee on Kyube Plus frame

10
years

10 year guarantee on Kyube timber frame

5
years

5 years guarantee on Pergolas and Verandas

LET'S TALK ABOUT SUSTAINABILITY

Our garden rooms, windows and doors are made & recycled in the UK

UPVC has long been recognised as an energy-efficient material for doors and windows. But did you know it's sustainable too? UPVC lasts up to 35 years, it's 95% recyclable and can be recycled up to 10 times. So, it can be reused, with minimal impact on the environment, for 350 years.

Our garden rooms also use timber that's certified as sustainable by the Forest Stewardship Council (FSC). And the cladding is made from 100% recyclable material.

Our pergolas and verandas are made from 100% recyclable aluminium

Aluminium is an excellent metal for many reasons – it's incredibly durable, it's strong, and there's little maintenance. It's also one of the most environmentally friendly metals on the planet. That's because aluminium can be recycled indefinitely!

We're committed to reducing our impact on the environment

At Eurocell, we're at the forefront of sustainable developments. We recycle around 3 million waste UPVC frames every year and use recycled or recyclable materials in all our products. Plus, it's all completed in the UK – reducing CO₂ emissions and cutting down travel miles.

So, our garden rooms, pergolas and verandas represent a genuinely sustainable option that's good for your home, your pocket and the environment.



Our Kyube Plus Garden Room offers excellent thermal performance

Our Kyube Plus garden room will keep you snug and warm in winter with its 2kW heater. And its PVC-U frames, A-rated double-glazed glass and high-quality insulation work together to keep the heat in, reduce energy consumption and keep your bills down.



GARDEN ROOMS, PERGOLAS & VERANDAS

THE RANGE

NEW



KYUBE PLUS MODULAR GARDEN ROOMS

An insulated garden room with vertical PVC or timber cladding, OSB interior, electrics and heating.

See pages 16-19 for more details.

KYUBE GARDEN ROOMS

A garden room with composite cladding. Create your own interior look or add our interior pack.

See pages 20-23 for more details.



OASIS DELUXE PERGOLAS

An aluminium frame pergola that lets you have a covered or open roof at the push of a button.

See pages 30-31 for more details.



OASIS PERGOLAS

An aluminium frame pergola that lets you tilt fixed louvres to adjust the amount of sun you let in.

See pages 32-33 for more details.



OASIS GLASS VERANDAS

An aluminium frame veranda that allows sunlight through while keeping you covered in the rain.

See pages 34-35 for more details.



OASIS POLYCARBONATE VERANDAS

An aluminium frame veranda in four roof colours so you can choose to have full sunlight or shade.

See pages 36-37 for more details.

KYUBE GARDEN ROOMS

The perfect place to retreat in your garden

When you need more space, using your garden is the simplest solution. By adding a garden room, you get the extra space you need, and you can make the most of your garden all year round.



NEW

KYUBE PLUS MODULAR GARDEN ROOMS

Kyube Plus garden rooms are high-quality, highly insulated garden buildings. Not only will they look stunning in your garden, but they've been meticulously crafted to provide a long-lasting, warm and quiet space too.

Best of all, Kyube Plus modular garden rooms are delivered prefabricated. So, they can be installed quickly, with no mess and no fuss.

Kyube Plus comes in thirteen sizes, ranging from our smallest at 2 x 2m to our largest at 5.8 x 3.3m... but don't be restricted because we can offer you a bespoke size too. You also have the option to add a front canopy and a storage extension.

The Kyube Plus exterior is beautifully clad with vertical panels – either in natural FSC larch or redwood, or with PVC cladding in a choice of four colours.

They come with a double-glazed sliding patio door, with the option to add an extra front window on our larger sizes. The frames are in anthracite grey, with satin black door furniture – colours that perfectly complement any of the cladding choices.



KYUBE PLUS

Choose from a range of options

13
sizes

Thirteen sizes plus a side-storage add-on option

6
colours

Two real woods and four PVC external cladding colours

1
style

Sliding patio door style

1
colour

Door and window frames are anthracite grey



The Kyube Plus offers a full room solution, with all the usual comforts you'd expect inside your home.

It's fully insulated and comes with an electric panel heater to keep you warm in cold weather. The insulation also prevents it from getting too hot in summer and provides soundproofing, so you won't have outside noises distracting you.

And, of course, just like your home, there's a full electric pack with plug sockets and lighting. So, you can use the space night and day.

The interior is fitted with OSB board, giving you a blank canvas, with the flexibility to add your own finish. Or you can opt to have the inside plastered. Then add your own flooring or choose our interior pack, which has a choice of luxury vinyl flooring and PVC skirting, both in a choice of three colours.

See pages 40-43 to see all the size and colour options available.



WHAT'S INCLUDED

- ✓ **Quick to install, prefabricated panel construction**
Giving you a 15 year guarantee
- ✓ **Low-maintenance weatherproof roof with guttering**
With EPDM rubber to withstand any weather
- ✓ **External, low-maintenance vertical cladding**
Choose from two timber and four PVC options
- ✓ **Stylish sliding patio doors**
Made from energy-efficient PVC and double-glazed glass
- ✓ **Optional full-height double glazed window**
Available on 5.2m and 5.8m wide buildings
- ✓ **Ultra-secure locks**
A multi-point locking system keeps your things safe
- ✓ **Internal electric kit included**
Includes four spotlights, one double switch, three double sockets and a 2kW panel heater
- ✓ **Unfinished interior with optional plastering**
The interior is finished with OSB board, with the option to have it fully plastered
- ✓ **Optional flooring pack**
With a choice of three flooring and three skirting colours

KYUBE GARDEN ROOMS

The modern natural appearance of Kyube makes it an attractive addition to any garden. It has a pressure treated timber frame, covered with low-maintenance composite cladding.

Kyube comes in six sizes, ranging from our smallest at 3.6 x 2.55m to our largest at 4.8 x 3.75m... but don't be restricted because we can offer you a bespoke size too. You also have the option to add a storage extension.

The Kyube exterior is beautifully clad with horizontal panels made from composite PVC, which is available in six New England colours that will blend beautifully with any garden.

They come with a choice of French, sliding patio or bi-fold doors. And if you choose French doors, you have the option of adding a corner window to let in more light. The frames come in a choice of three colours, with five door furniture colour options.



KYUBE TIMBER FRAME

Choose from a range of options

6
sizes

6
colours

Six sizes plus a side-storage add-on option

Six external composite cladding colours

3
styles

3
colours

Choose French, patio or bi-fold doors

Three door and window colours

If you want more flexibility with your interior, the Kyube timber frame is the best choice. It has unfinished timber walls and floor, or you can choose insulated OSB board. Either way, it's a blank canvas, ready for you to add your own finish.

But if you don't want the hassle of doing it yourself, opt for our interior pack. It consists of wall cladding in a choice of colours, luxury vinyl flooring and PVC skirting. Giving you a high-quality interior finish.

And, as standard, there's a full electric pack with plug sockets and lighting. So, you can use the space night and day.

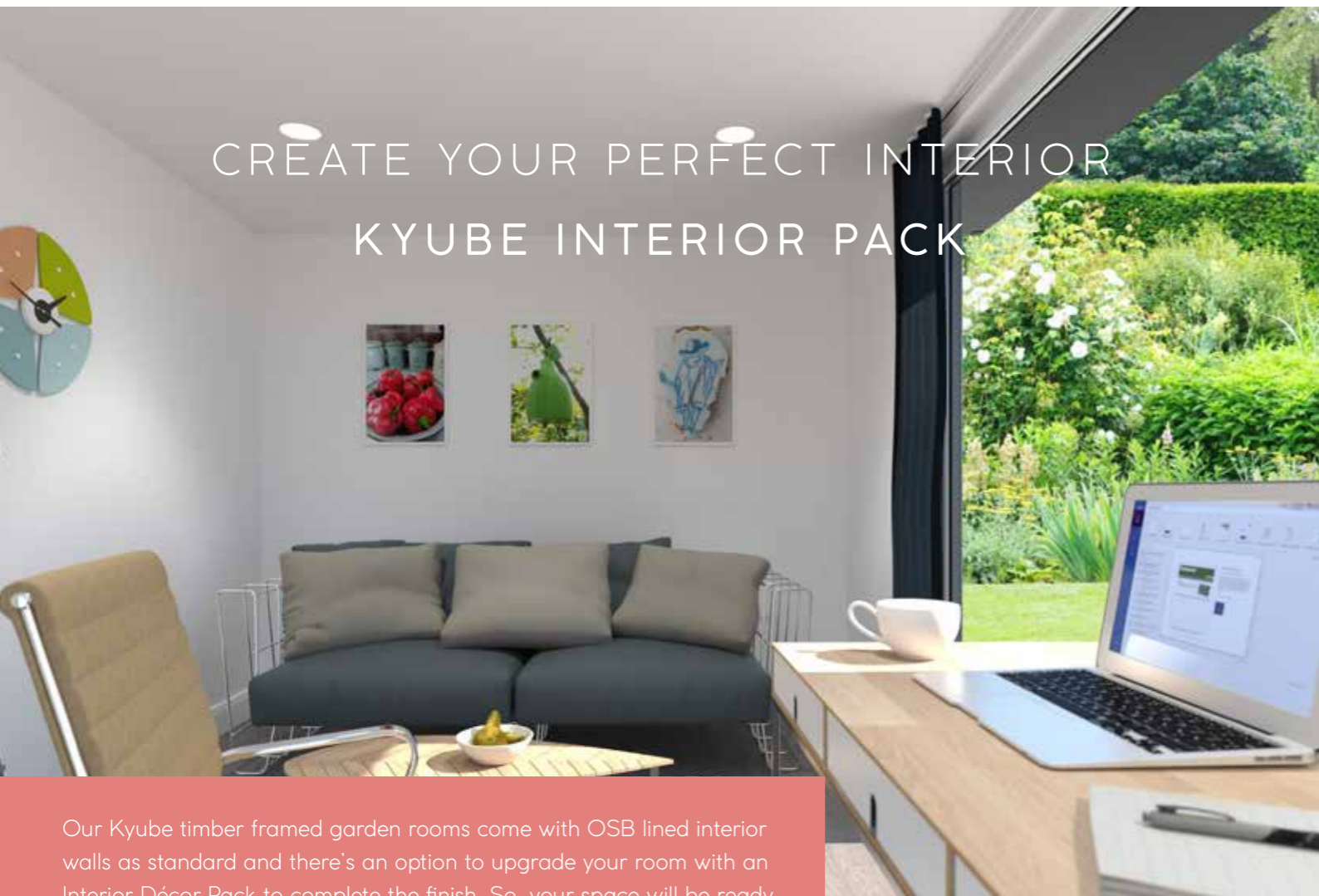
See pages 44-47 to see all the size and colour options available.



WHAT'S INCLUDED

- ✓ **Pressure-treated timber frame**
With a 10 year guarantee
- ✓ **Maintenance-free composite cladding**
Choose from six New England colours
- ✓ **Optional corner double-glazed window**
Available when paired with a French door
- ✓ **Double-glazed French, sliding or bi-fold doors**
Energy-efficient with a choice of three frame colours
- ✓ **Ultra-secure locks**
A multi-point locking system keeps your things safe
- ✓ **Low-maintenance weatherproof roof**
With EPDM rubber to withstand any weather
- ✓ **Electric kit included**
Includes a consumer unit, power sockets and external lights
- ✓ **Unfinished interior with optional insulation and interior pack**
Create your own design, or let us help

CREATE YOUR PERFECT INTERIOR KYUBE INTERIOR PACK



Our Kyube timber framed garden rooms come with OSB lined interior walls as standard and there's an option to upgrade your room with an Interior Décor Pack to complete the finish. So, your space will be ready to use as soon as it's installed.



Wall cladding

Panelled walls are the perfect way to create a cosy atmosphere in your garden room. They're incredibly durable and easy to clean.

Choose from three classic colours and textures: fun wood, brown slate and light wood.



Luxury vinyl tile flooring

Vinyl flooring is ideal for garden rooms. It's easy to clean, slip and water-resistant, and adds sound and insulating properties to help your room feel snug all year round.

Choose from three beautiful wood effect colours: English oak, Irish oak and Swedish oak.



Recycled PVC-U skirting

A skirting board adds a finishing touch to your room. Its surface never needs sanding or painting. Simply wipe clean to keep it looking its best.

Choose from three stunning colours: English oak, white satin and anthracite grey.

FOR WHEN YOU NEED MORE STORAGE KYUBE ADD-ON STORAGE

Do you love the Kyube's double doors but don't like the idea of your valuables being seen? Or have you just got so much stuff that you don't want it cluttering up your new space? Our Kyube add-on storage extension is the perfect solution.

The Kyube add-on extends out from the side of your garden room and provides extra space for storage. It's accessed through a single double-glazed or unglazed door.

This option is available with all Kyube and Kyube Plus garden rooms.



NEW



OASIS PERGOLAS & VERANDAS

Make the most of your garden in all weathers

When the sun's too bright and hot, or the rain comes down, a pergola or veranda is the perfect place to shelter. Add one to your garden, and you can be enjoying your outdoor space all year round.



OASIS PERGOLAS & VERANDAS

The best at home

Oasis pergolas and verandas add a stylish extension to your home. And they don't just look good – they're extremely practical too. Helping you make use of your garden in all weathers. They're made from carefully selected, high-quality aluminium, which is solid, durable and weatherproof. And they hardly require any maintenance.

WHY CHOOSE AN ALUMINIUM PERGOLA OR VERANDA?



Aluminium is more durable than other pergola and veranda materials, making them an excellent investment.



An aluminium pergola or veranda offers a strong construction that will probably last you a lifetime.



Aluminium pergolas and verandas have a long lifespan, meaning your investment will give you many years of care-free enjoyment and outdoor living.



Aluminium requires little maintenance.

OASIS DELUXE PERGOLAS

with automated sliding retractable louvres

Our Oasis deluxe pergola gives you the convertible effect in your own back garden!



A deluxe pergola gives you the best of both worlds. Open the roof for unobstructed views. Or cover up if it's too sunny or raining – all at the touch of a button.

Our deluxe pergolas are available in eleven sizes, ranging from our smallest at 3 x 3.02m to our largest at 4 x 6.08m. And you can choose to have it attached to your house, or freestanding.

Deluxe pergolas also come with the option to add an LED light strip. Providing an easy way to enjoy your space after dark.

OASIS DELUXE PERGOLAS

Choose from a range of options

11
sizes

Available in eleven sizes

1
colour

Comes with a texturised grey frame

2
frames

Choose freestanding or wall mounted

1
Light

LED strip lights available

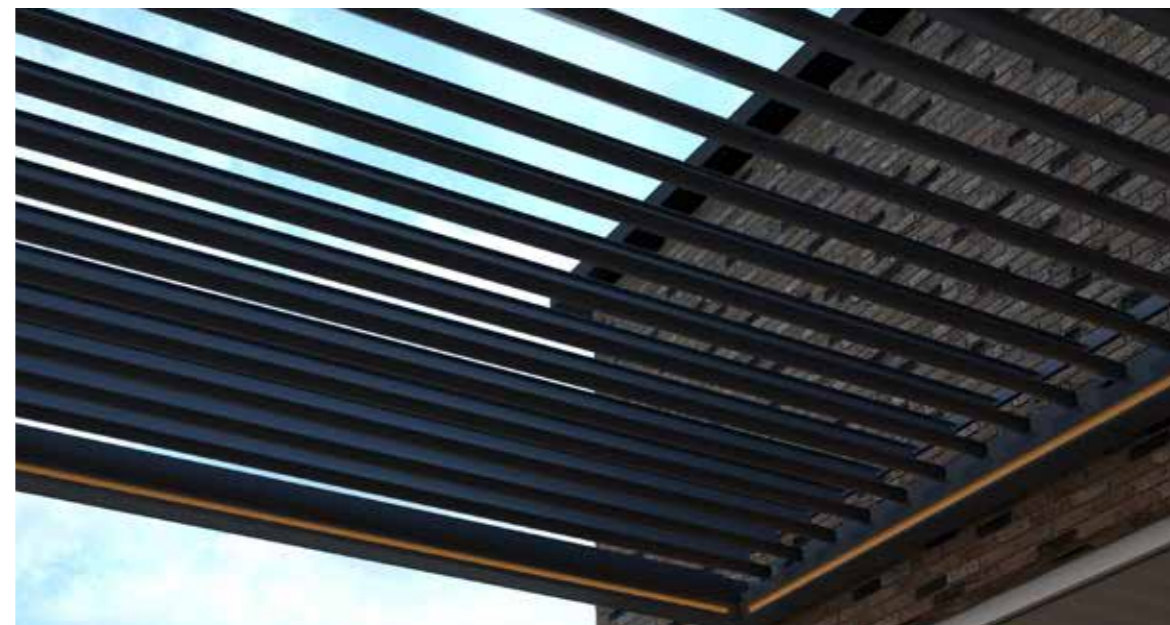
OASIS PERGOLAS

with automated fixed rotating louvres

With an Oasis pergola, you decide how much you want to enjoy the sun and weather. Using a remote control, simply tilt the roof louvres to different positions to adjust the light, shade and airflow. So, you can enjoy your outside space all year round.

Our Oasis pergolas are available in six sizes, ranging from our smallest at 3 x 3.01m to our largest at 4.95 x 3.5m. And you can choose to have it attached to your house, or freestanding.

Oasis pergolas also come with the option to add an LED light strip. Providing an easy way to enjoy your space after dark.



OASIS PERGOLAS

Choose from a range of options

6
sizes

Available in six sizes

1
colour

Comes with a textured grey frame

2
frames

Choose freestanding or wall mounted

1
Light

LED strip lights available

OASIS GLASS VERANDAS

with a glazed roof

Enjoy the daylight and uninterrupted views of trees, birds and stars under a beautiful clear glass veranda. Our Oasis glass verandas aim to bring enrichment to your outdoor life and a feeling of pure luxury. They give you space to enjoy being outdoors while offering you shelter from bad weather. And a glass roof means they won't block out the light coming through your home's windows.

Our Oasis glass verandas have an aluminium frame in a choice of three colours: white textures, cream white or grey textured. They're available in three

widths and four depths, ranging from our smallest at 4.06 x 2.50m to our largest at 6.06 x 4m.

There's also a choice of frame and gutter. You can choose square or half-round legs, with or without a footplate. And the gutters can be classic shaped or round. This gives you more flexibility to choose a frame that complements the style of your home.



OASIS GLAZED ROOF VERANDAS

Choose from a range of options

3 widths

Available in three widths

4 depths

Available in four frame projection sizes

3 colours

Frame colours – White, cream or grey

2 frames

Square or half-round legs & round or classic gutters

OASIS VERANDAS

with a polycarbonate roof

If you'd like a veranda that's finished to perfection and is fully customisable to your needs, then meet the Oasis polycarbonate roof veranda.

Our polycarbonate roof veranda comes in a choice of three roof colours. If you love a clear view so you can see the sky and trees around you, choose a clear or ultra-clear roof. Or, if you'd prefer a bit of protection from the sun but still want plenty of light coming through, opt for opal or solar control.

Our Oasis polycarbonate verandas have an aluminium frame in a choice of three colours: white textures, cream white or grey textured. They're available in three widths and five depths, ranging from our smallest at 4.06 x 2.50m to our largest at 6.06 x 6m.

There's also a choice of frame and gutter. You can choose a round or classic ornamental gutter and half-round or square posts, with or without a footplate. Giving you the flexibility to choose a style that complements your home.



OASIS POLYCARBONATE ROOF VERANDA

Choose from a range of options

3
widths

Available in three widths

5
depths

Available in five depths

3
colours

Choose white textures, cream white or grey textured

2
frames

Choose square or half-round legs & round or classic gutters

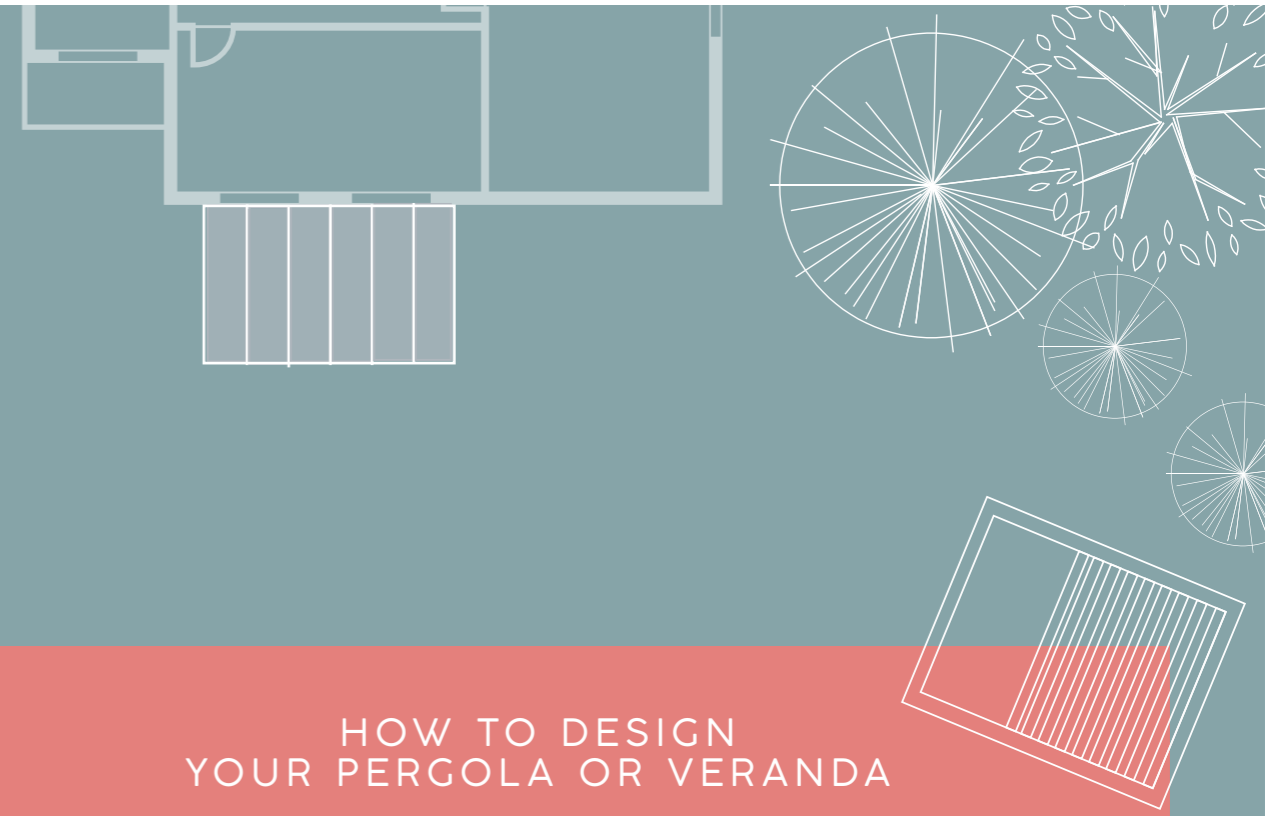


DESIGN YOUR BESPOKE OUTDOOR SPACE

Garden rooms, pergolas and verandas

Our garden rooms, pergolas and verandas are designed to be versatile. That means you can choose the size, finish and specifications to create a bespoke design that suits your needs.

The following pages take you through all the options available to help you plan your dream space. But don't forget, our expert team are on hand, waiting to take you through the journey when you're ready.



HOW TO DESIGN YOUR GARDEN ROOM

- Step 1:** Choose Kyube or Kyube Plus
- Step 2:** Choose your size
- Step 3:** Choose your cladding colour
- Step 4:** Decide if you want a canopy (Kyube Plus only)
- Step 5:** Choose your door style and optional corner window (Kyube only)
- Step 6:** Decide if you want an optional interior pack or storage extension

HOW TO DESIGN YOUR PERGOLA OR VERANDA

- Step 1:** Choose a pergola or veranda
- Step 2:** Choose your roof type
- Step 3:** Choose your size
- Step 4:** Choose wall mounted or freestanding and if you require lighting (Pergolas only)
- Step 5:** Choose your frame colour (Verandas only)
- Step 6:** Choose your leg, gutter and footplate type (Verandas only)



KYUBE PLUS

CHOOSE:
SIZE
CLADDING COLOUR
CANOPY
INTERIOR PACK
STORAGE EXTENSION

See pages 40-43 for all the options.



KYUBE

CHOOSE:
SIZE
CLADDING COLOUR
DOOR STYLE & COLOURS
CORNER WINDOW
INTERIOR PACK

See pages 44-47 for all the options.



PERGOLA

CHOOSE:
ROOF TYPE
SIZE
WALLMOUNTED OR FREESTANDING
LIGHTING OPTION

See pages 48-49 for all the options.



VERANDA

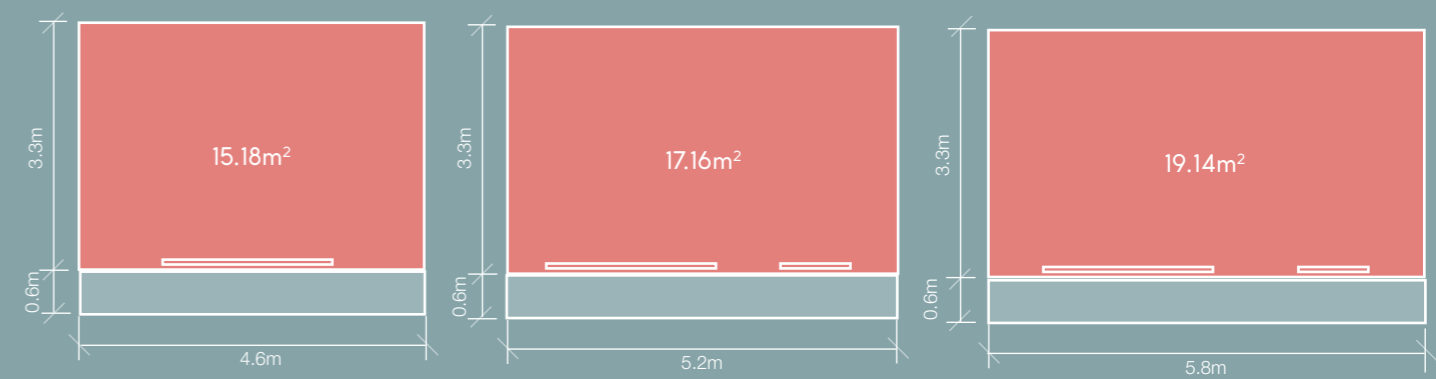
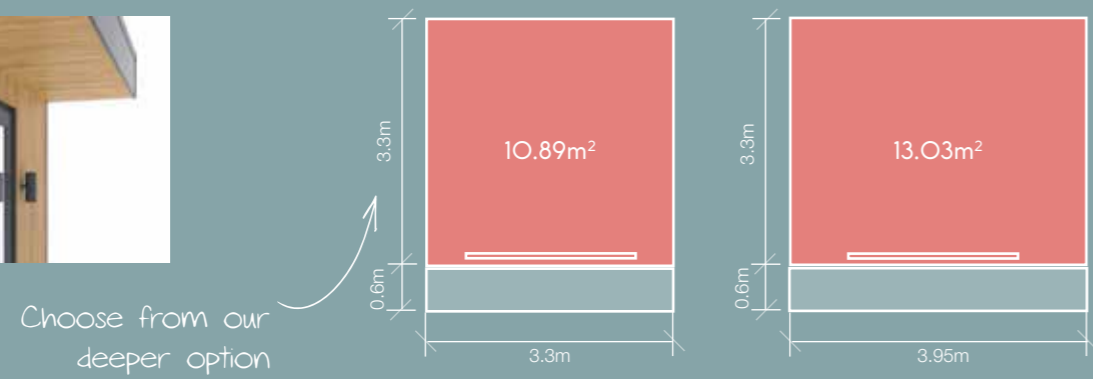
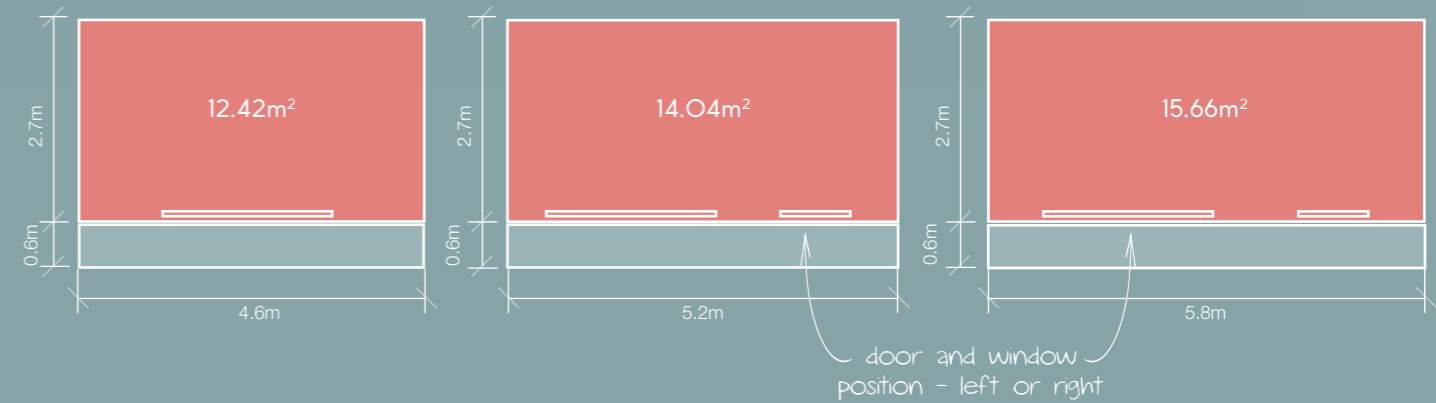
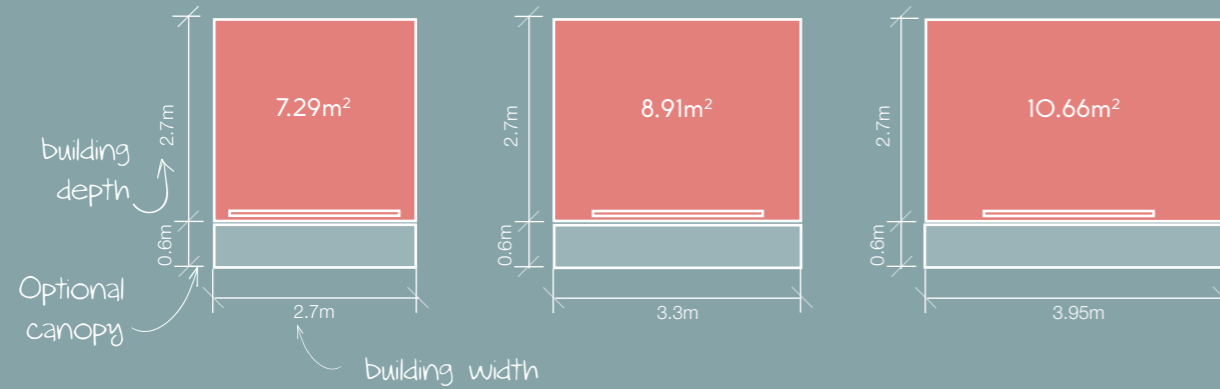
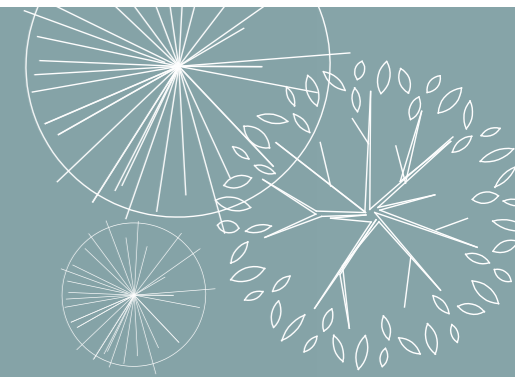
CHOOSE:
ROOF TYPE
SIZE
FRAME COLOUR
LEG, GUTTER & FOOTPLATE

See pages 50-51 for all the options.

DESIGN YOUR KYUBE PLUS GARDEN ROOM

Kyube Plus Modular Garden Rooms

Kyube Plus is available in thirteen sizes, but don't let that restrict you. We can offer a bespoke size too. In addition, you can opt for a front canopy (shown on each diagram below) and a storage extension. And on our larger 5.2m and 5.8m garden rooms, you can choose which way round you'd like the door and window.



- | | | | | | | |
|----------------------|---|---|---|---|---|---|
| DOOR OPTION | <input checked="" type="checkbox"/> 2.4m Sliding patio door | <input checked="" type="checkbox"/> 2.4m Sliding patio door | <input checked="" type="checkbox"/> 2.4m Sliding patio door | <input checked="" type="checkbox"/> 2.4m Sliding patio door | <input checked="" type="checkbox"/> 2.4m Sliding patio door | <input checked="" type="checkbox"/> 2.4m Sliding patio door |
| FRONT WINDOW* | <input checked="" type="checkbox"/> 900mm window Left/Right | <input checked="" type="checkbox"/> 900mm window Left/Right | <input checked="" type="checkbox"/> 900mm window Left/Right | <input checked="" type="checkbox"/> 900mm window Left/Right | <input checked="" type="checkbox"/> 900mm window Left/Right | <input checked="" type="checkbox"/> 900mm window Left/Right |
| FRONT CANOPY | <input checked="" type="checkbox"/> 0.6m deep x 2.7m wide | <input checked="" type="checkbox"/> 0.6m deep x 3.3m wide | <input checked="" type="checkbox"/> 0.6m deep x 3.95m wide | <input checked="" type="checkbox"/> 0.6m deep x 4.6m wide | <input checked="" type="checkbox"/> 0.6m deep x 5.2m wide | <input checked="" type="checkbox"/> 0.6m deep x 5.8m wide |

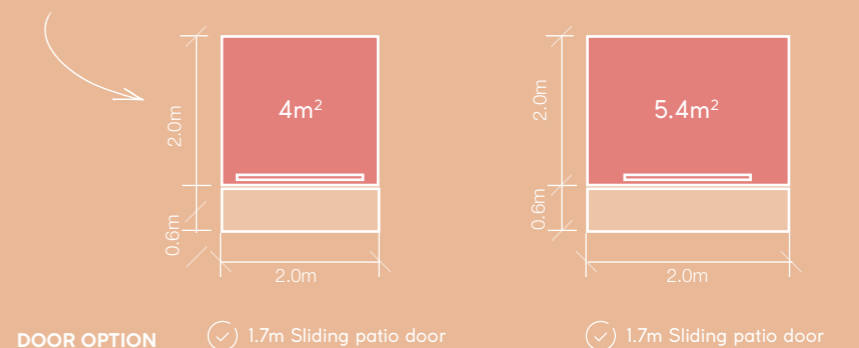
*Front window only available on 5.2m and 5.8m wide buildings

- | | |
|--------------------------|--|
| STORAGE EXTENSION | <input checked="" type="checkbox"/> 1.2m x 2m/2.7m/3.3m |
| | <input checked="" type="checkbox"/> Available for all widths |
| | <input checked="" type="checkbox"/> Left/Right |
| STORAGE DOOR | <input checked="" type="checkbox"/> Single glazed |
| | <input checked="" type="checkbox"/> Single unglazed |



Don't forget you can also add a canopy when you choose the storage add-on option

When you're pushed for space why not choose from our 2m deep options



DESIGN YOUR KYUBE PLUS GARDEN ROOM

Kyube Modular Garden Room

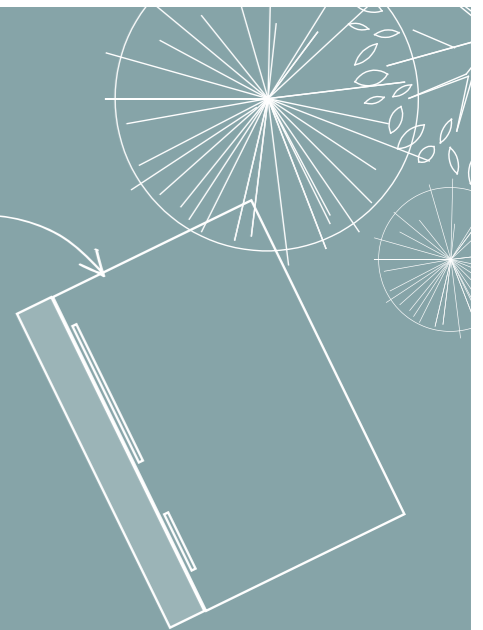
The options on this page let you customise your Kyube Plus garden room further. Choose your external cladding material and colour. Decide if you want the standard OSB board internal finish or opt for a plastered finish. And you have the option of an interior pack which includes your choice of flooring and skirting.

Choose from 6 external cladding options

4 options of UPVC cladding or 2 real wood options

Interior pack option includes flooring and skirting

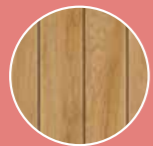
Find the perfect place for your private retreat.



EXTERNAL CLADDING



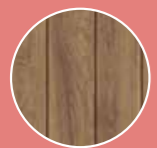
ANTHRACITE GREY
PVC



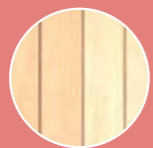
TURNER OAK
PVC



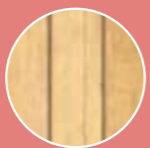
SHEFFIELD
CONCRETE
PVC



ANTEAK
PVC



REDWOOD
wood



LARCH
wood



INTERIOR FINISH



OSB
(STANDARD)



PLASTERED
(OPTIONAL)

FLOORING



ENGLISH OAK



IRISH OAK



SWEDISH OAK

SKIRTING BOARDS



WHITE ASH



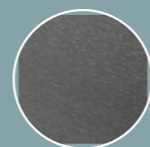
ANTHRACITE GREY



ENGLISH OAK



DOOR & WINDOW FRAMES



ANTHRACITE
GREY

DOOR FURNITURE



SATIN BLACK

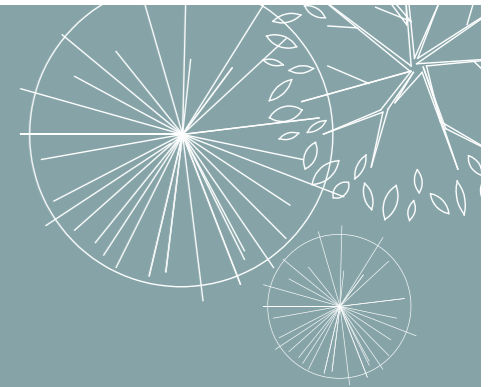


DESIGN YOUR KYUBE GARDEN ROOM

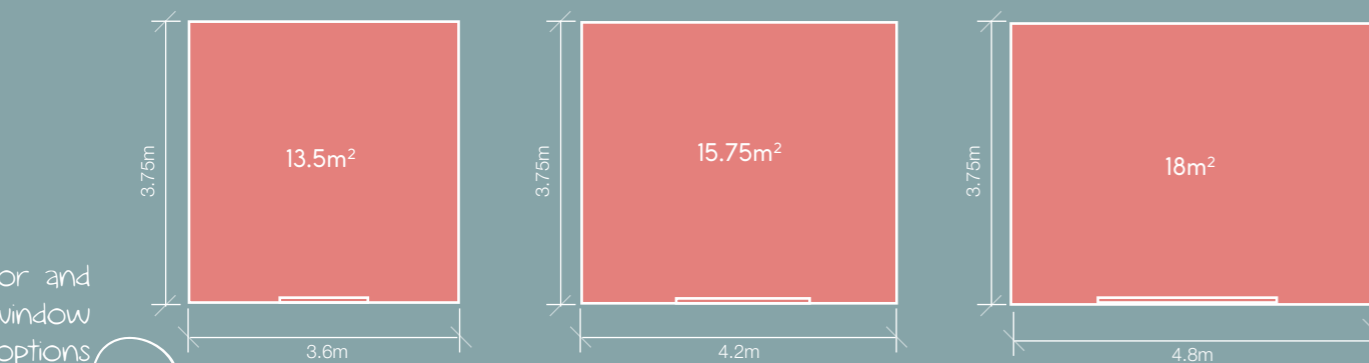
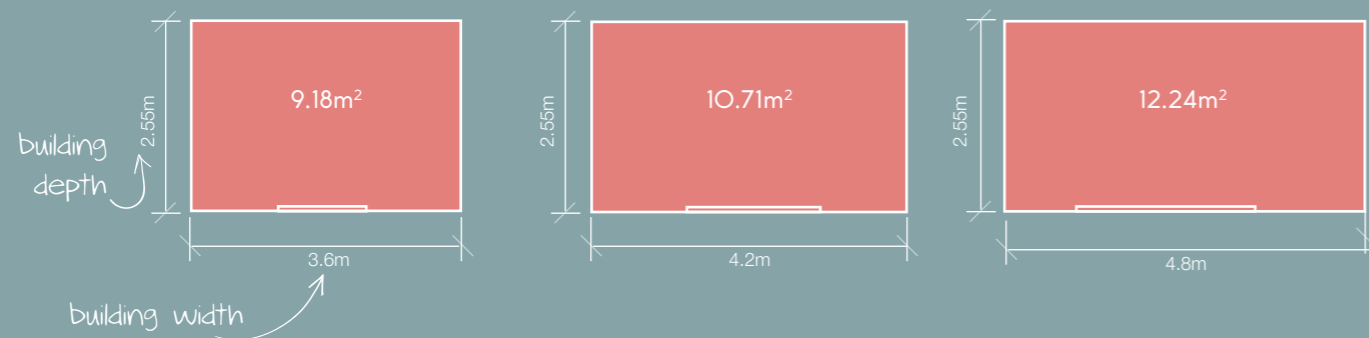
Kyube Timber Frame Garden Rooms

Kyube timber frame garden rooms are available in six sizes, but don't let that restrict you. We can offer a bespoke size too. In addition, you can opt for a storage extension, and an OSB interior finish and insulation.

And you can choose from three door styles in three frame colours and five door furniture colours. If you choose a French door, you can also add a corner window.



DOOR OPTIONS



- DOOR OPTION**
- 1.2m French door
 - 1.8m Sliding patio door
 - 1.8m Bi-fold door
- CORNER WINDOW***
- Left/Right/Both

*Corner window available only when paired with a French door



FRENCH DOORS
1.4m wide (1.2m wide on 3.6m wide buildings)

PATIO DOORS
2.4m wide (left/right opening)

BI-FOLD DOORS
2.4m wide (left/right outward opening)

FLOOD WITH NATURAL LIGHT



FRENCH DOORS + CORNER WINDOW
600mm corner window (left/right/both sides)

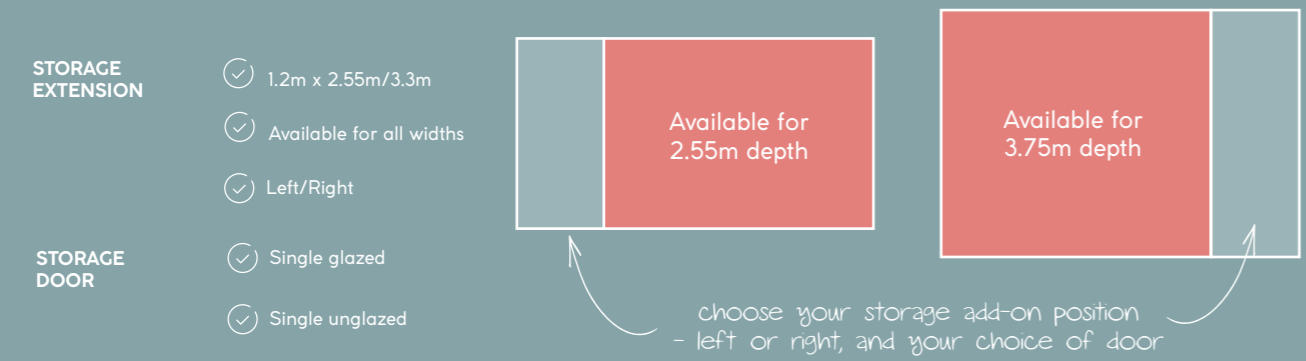
corner window position
- left or right

STORAGE EXTENSION



SIDE STORAGE
1.2m wide with single solid/glazed door

storage add-on position
- left or right



DESIGN YOUR KYUBE GARDEN ROOM

Kyube Timber Frame Garden Room

The options on this page let you customise your Kyube garden room further. Choose your external cladding, door and window, and door furniture colours. Then decide if you'd like the optional interior pack, which includes your choice of internal cladding, flooring and skirting.

Choose from six external cladding options

six composite cladding options

Interior pack option includes interior cladding flooring and skirting

A place to get away from it all.



EXTERNAL CLADDING



ANTHRACITE GREY



PIGEON BLUE



MOONDUST GREY



TAUPE



SOFT GREEN



OYSTER



INTERIOR FINISH



TIMBER FINISH (STANDARD)



OSB (OPTIONAL)



PLASTERBOARD (OPTIONAL)

FLOORING



ENGLISH OAK



IRISH OAK



SWEDISH OAK

INTERIOR CLADDING



FUN WOOD



LIGHT WOOD



WHITE

SKIRTING BOARDS



WHITE ASH



ANTHRACITE GREY



ENGLISH OAK

DOOR & WINDOW FRAME COLOURS



ANTHRACITE GREY



GOLDEN OAK



WHITE

DOOR FURNITURE COLOURS



WHITE



GOLD



CHROME

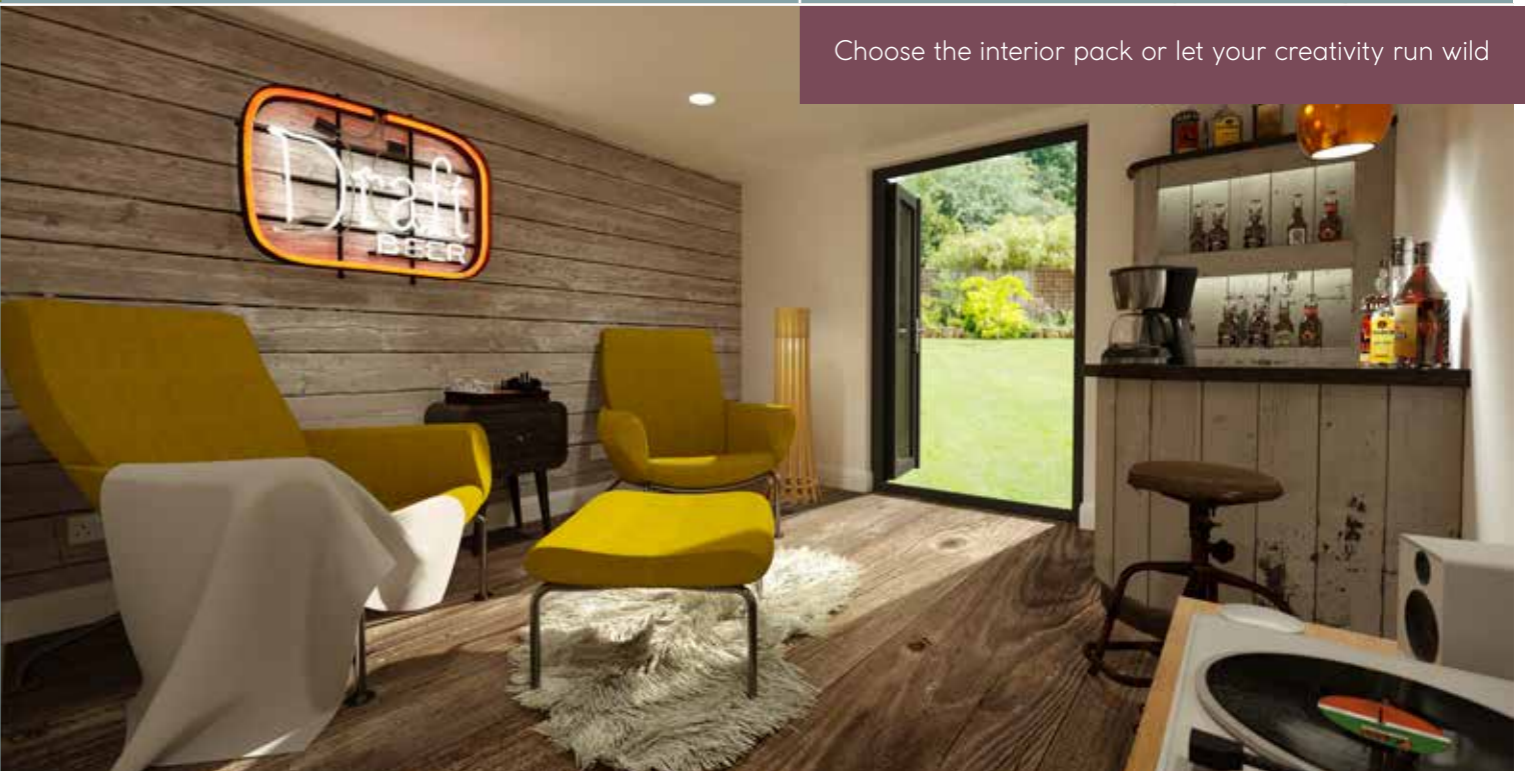


SATIN SILVER



SATIN BLACK

Choose the interior pack or let your creativity run wild

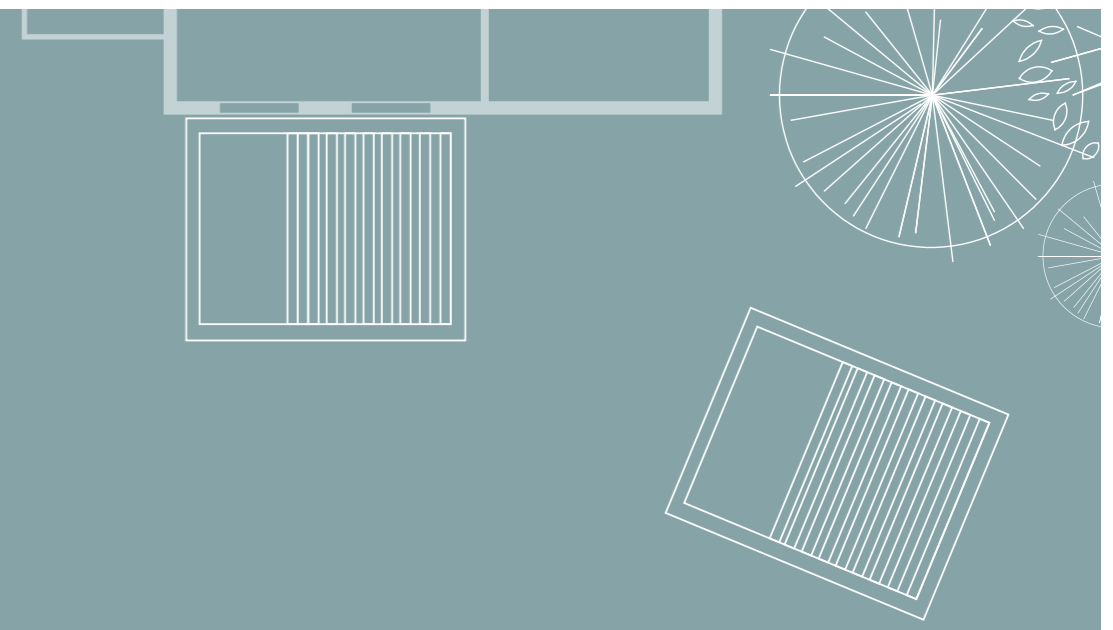


DESIGN YOUR OASIS PERGOLA

Standard and Deluxe Pergolas

Our Oasis pergolas come in two options. The Deluxe pergola has a retractable roof and is available in eleven sizes. And the standard pergola has a fixed rotating louvre roof and is available in six sizes. You can also choose to have your pergola freestanding or as a canopy attached to your house.

Choose between a fully rotating and retractable louvre or a fixed rotating louvre.



PERGOLA ROOF



DELUXE PERGOLA WITH RETRACTABLE ROOF



STANDARD PERGOLA WITH FIXED ROTATING LOUVRE ROOF

SIZE CHART

STANDARD PERGOLA

	depth	
	3000	3500
width	3011	✓
	3539	✓
	4067	✓
	4947	✓

DELUXE PERGOLA

	depth		
	3000	3500	4000
width	3014	✓	
	3517	✓	
	4128	✓	✓
	4964	✓	✓
	6078	✓	✓

PERGOLA FRAME

All pergolas have a square profile frame in grey



SQUARE FRAME ONLY

LED STRIP LIGHTS

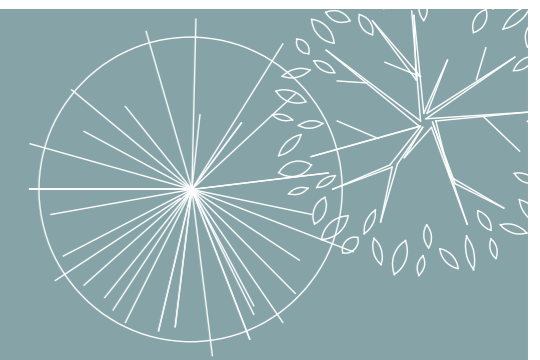
These elegant LED strip lights let you stay outside after dark and they come as standard.



DESIGN YOUR OASIS VERANDA

Glass Verandas and Polycarbonate Verandas

Our Oasis verandas come in two options. The glass veranda has a glazed roof, and the polycarbonate veranda has a polycarbonate roof with four colour options. In addition, you can choose from three frame colours and two types of leg, guttering and footplate.



ROOF TYPE



GLAZED ROOFING



POLYCARBONATE ROOFING

Choose a colour for your polycarbonate

POLYCARBONATE COLOURS



CLEAR



ULTRA-CLEAR



SOLAR



OPAL

FRAME COLOUR



WHITE TEXTURED



CREAM WHITE



GREY TEXTURED

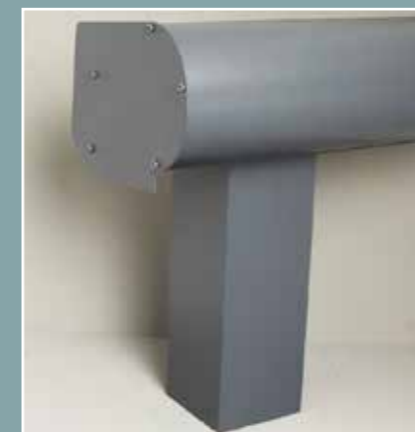


STRUCTURE SIZE CHART

	width	4060	5060	6060
projection	2500	✓	✓	✓
	3000	✓	✓	✓
	3500	✓	✓	✓
	4000	✓	✓	✓
	6000	✓	✓	✓

only available in polycarbonate

VERANDA LEG, GUTTER AND FOOTPLATE



SQUARE LEG, ROUND GUTTER, NO FOOTPLATE



HALF-ROUND LEG, CLASSIC GUTTER, WITH FOOTPLATE

Chosen a Veranda? Select your choice of gutter and leg type

RANGE COMPARISON KYUBE GARDEN ROOMS

FEATURES	KYUBE GARDEN ROOMS	
EXTERIOR	KYUBE TIMBER FRAME	KYUBE PLUS
Foundations type	Concrete base recommended. Can use ground screws.	Concrete base recommended. Can use ground screws.
Frame construction	Pressure treated timber with a 10 year guarantee	Prefabricated panels with a 15 year guarantee
External cladding	Coastline composite cladding in a choice of six colours	PVC-U cladding in a choice of four colours, timber in 2 colours
FSC certified timber	Yes	Yes
Side storage add-on	Optional – 1200mm with glazed or solid door	Optional – 1200mm with glazed or solid door
Insulation	Optional	Yes
Soundproofing	Optional	Yes
Roof material	Low maintenance EPDM rubber roof	Low maintenance EPDM rubber roof
Roof canopy	No	Optional 600mm for all building widths
External lights	Yes	Yes
Double-glazed door options	Sliding patio, bi-fold or French	Sliding patio on all buildings
Double-glazed window options	Optional corner window with French door (left/right/both sides)	Optional front window on 5.2m and 5.8m width buildings only
Window and door frame material	PVC-U	PVC-U – Anthracite Grey
Ultra-secure multi-point locking system	Yes	Yes
INTERIOR		
Walls	Unfinish. Optional timber board and cladding finish	OSB finish. Optional plaster finish
Flooring	Unfinished. Optional timber board and vinyl flooring	OSB finish. Optional vinyl flooring
Ceiling	Unfinished. Optional timber board and cladding finish	OSB finish. Optional plaster finish
Skirting board	Optional PVC-U skirting	Optional PVC-U skirting
Electric pack	Yes	Yes
Electric sockets	Yes	Yes
Lighting	Yes	Yes
Electric heater	No	Yes

RANGE COMPARISON OASIS PERGOLAS & VERANDAS

FEATURES	OASIS PERGOLAS		OASIS VERANDAS	
	PERGOLA	PERGOLA DELUXE	VERANDA - GLAZED	VERANDA - POLYCARBONATE
Veranda at home	Yes	Yes	Yes	Yes
Free-standing veranda	Yes	Yes	-	-
Roofing: Polycarbonate	-	-	Yes	Yes
Roofing: Other	Panels	Panels	Glass	Polycarbonate
Motorized (SOMFY)	Yes	Yes	-	-
Maximum width (mm)	3500	4000	6060	6060
Maximum projection (mm)	4947	6078	6000	6000
Maximum span on two posts (mm)	4947	6078	4000	4000
Available colours	Anthracite Grey	Anthracite Grey	Anthracite Grey/ Cream/White	Anthracite Grey/ Cream/White
Decorative gutter front options	Straight	Straight	Round/Classic	Round/Classic
Post options	Square	Square	Square/Half-round	Square/Half-round



USEFUL INFORMATION

CHOOSING THE PERFECT PLACE FOR YOUR GARDEN ROOM

There are a few important things to consider when you're deciding where to put your garden room. So, we've put this guide together to help you.

✓ How is your garden room going to be used?

To ensure you get the right size garden room for your needs, it's important to think about how it will be used now and in the future. For example, if it's going to be an office for one person, is it possible you may need room for two people later? Getting the right size from the start can save you a lot of cost and hassle in future.

✓ What time of day are you going to use it?

The way light comes into a room can change the way it feels. Having the door or windows facing south or west will capture natural light and increase the temperature of the room. But if they're facing north or east, the room may feel dark and cool.

✓ How are you getting to your garden room?

If you're planning to use your garden room all year round, you may want to lay a path from the house to the room so you don't have to walk over wet or muddy grass during the winter.

✓ How will electrics get to your garden room?

All our Kyube garden rooms come with electrics, which means a cable will need to be run from the house to the building. So, consider the path of the cable and ensure there are no obstacles in the way.

✓ Consider fences and hedges

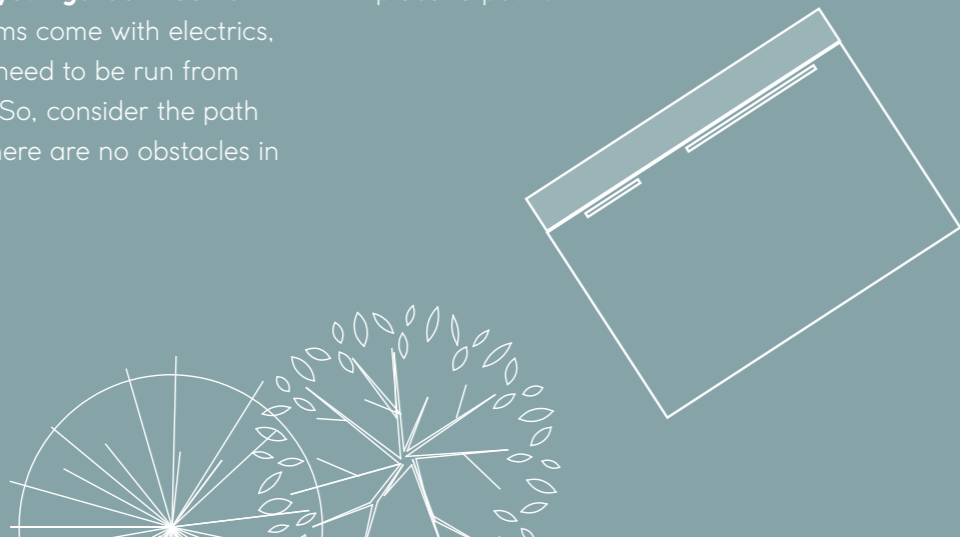
If you're planning to put your garden building near a fence or hedge, you'll need to leave a minimum 1m gap. This is to ensure our installers have space to construct the building, but also so you can maintain the hedge or fence and clean the building.

✓ What about your view?

The view from your garden building can change the way you feel about it when you're in it. So, sit in the space you're thinking of using and consider where the doors and windows will be and what you'll be able to see from there. If you want a quiet space where you can work or relax, keep the building away from overlooking neighbours and their barbecue and play areas.

✓ What's the condition of the ground?

Your garden room needs to be built on flat, well-drained ground. So, think about what the ground is like at different times of the year. If it's regularly water-logged, then it's probably not the best place to put it.



USEFUL INFORMATION

PLANNING PERMISSION

Garden rooms

We know applying for planning permission to make changes to your home can be a lot of hassle that takes months to sort out. And we know you don't want to wait! That's why we've carefully designed our garden rooms so that planning permission isn't needed in 90% of cases.

We've achieved this by designing our garden rooms to meet and exceed building regulations. And we've built them to a height that falls within permitted development. However, there are some rare exceptions to this.

You may need planning permission if:

- you want to build in front of the principal elevation of your house (generally classed as the elevation containing the front door)
- you live in a conservation area
- you live in a listed building
- your building takes the total area of land occupied by buildings to over half (not including the original dwelling house as it was in 1947)
- you or anyone else plans to live in the building

Pergolas and verandas

If you plan to put your pergola or veranda at the back of your house, then planning permission normally isn't needed unless you live in a conservation area. However, you will need planning permission if you want to put your pergola or veranda at the front of the house or at the side, between the house and a boundary wall.

If you think you'll need planning permission, or if you're not sure, please consult your local planning office.

FOUNDATIONS

When you're buying a garden room, the foundations may be the last thing you think about. But they're an essential feature. A strong, stable foundation is vital to ensure your garden room is supported for years to come.

We recommend having your garden room installed on a level concrete base or with ground screws.

What are ground screws?

Ground screws are huge screws that are bored deep into the ground. The heads of the screws protrude above the ground providing a stable, level surface for your garden building to be built upon.

GARDEN ROOMS, PERGOLAS & VERANDAS IN FIVE EASY STEPS

We've made expanding your living space easy with our range of garden rooms, pergolas and verandas.



Follow these simple steps to get started straight away!



STEP 1: MAKE AN ENQUIRY

Complete our online form at eurocell.co.uk/gardenrooms, email us at enquiries@eurocell.co.uk or call us on **0333 005 6525** to discuss your requirements.



STEP 2: YOU'LL BE ALLOCATED A DEDICATED ADVISOR

Your dedicated advisor will help you throughout the buying and installation process.



STEP 3: WE'LL CARRY OUT A FREE SITE SURVEY

Your dedicated advisor will visit your home at a time to suit you to carry out a survey and give you advice and inspiration.



STEP 4: WE'LL SEND YOU A FREE NO-OBLIGATION QUOTE

Your dedicated advisor will send you a free quote, along with detailed specifications and drawings of your dream building.



STEP 5: WE'LL INSTALL YOUR GARDEN ROOM, PERGOLA OR VERANDA

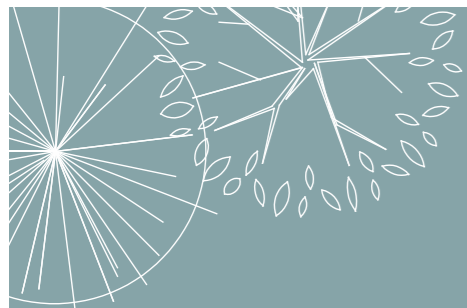
Your approved installer and their team will expertly install your garden room, pergola or veranda, treating your home with respect, minimalising disruption and mess.



Then, sit back, relax and enjoy your new space.

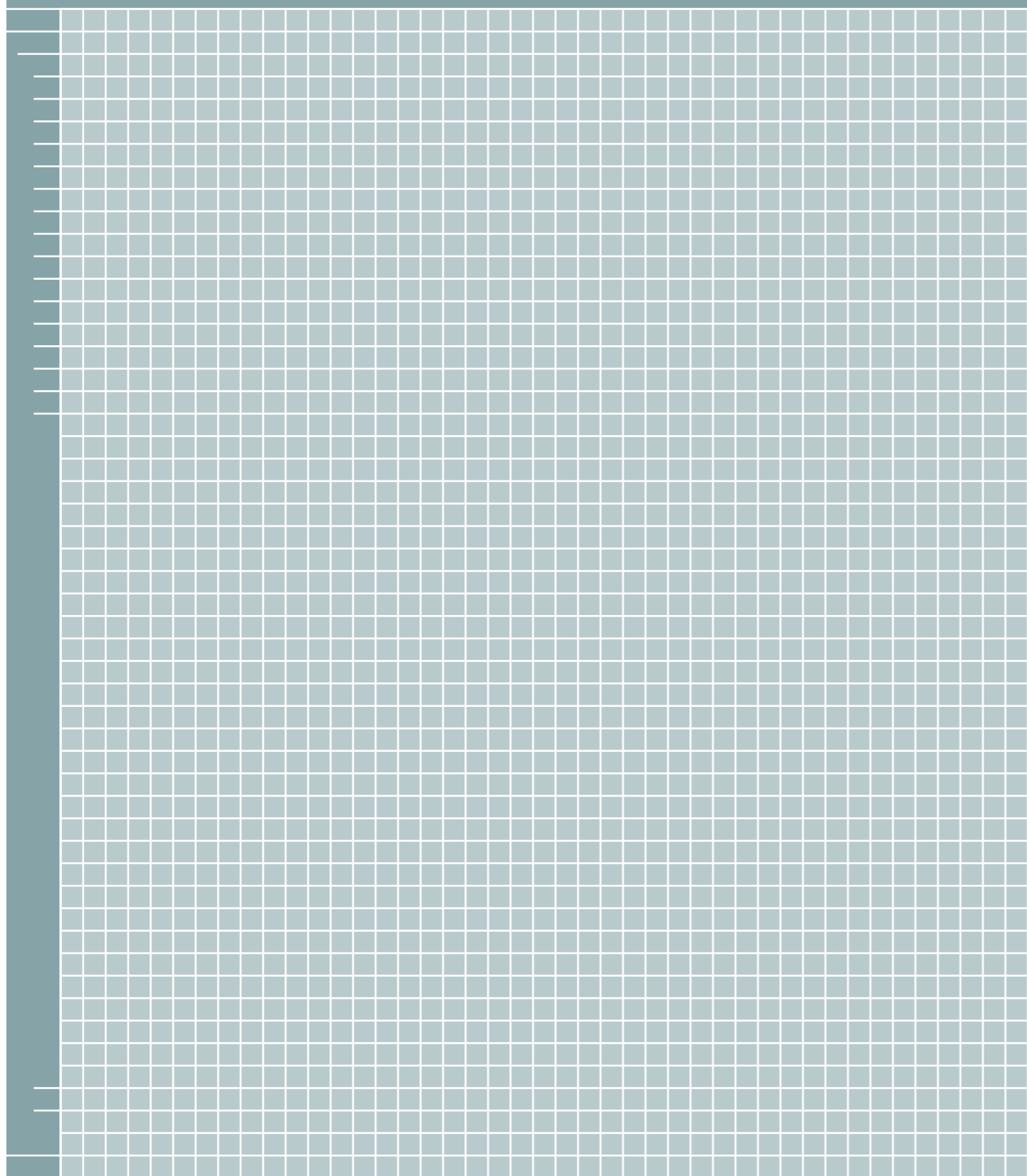
Call us on **0333 005 6525**, email enquiries@eurocell.co.uk or visit eurocell.co.uk/gardenrooms and get started today!

Our friendly call centre advisors are here to help Monday - Friday: 8:30am to 5:00pm



DESIGN GRID

Use the space below to design your perfect garden room.



DESIGN CHECKLIST

Have you chosen all your options for your new living space? Use the checklists below to help you.

Kyube Garden Rooms

To see all your options, go to pages 40-43 for Kyube Plus and pages 44-47 for Kyube.

- Which garden room?
- Which size?
- Do you want an optional canopy? (Kyube plus only)
- Do you want a storage extension?
- Do you want optional OSB board and insulation? (Kyube only)
- Do you want an optional corner window? (Kyube only)
- Which external cladding colour?
- Do you want an optional finished interior?
- Which door and window colours? (Kyube only)
- Do you want optional flooring and skirting board?

Oasis Pergolas

To see all your options, go to pages 48-49.

- Which roof type?
- Which size?

Oasis Verandas

To see all your options, go to pages 50-51.

- Which roof type?
- Which roof colour (polycarbonate only)
- Which frame colour?
- Which leg, gutter and footplate type?





eurocell.co.uk



**MADE & RECYCLED
IN THE UK**

Product specification is subject to change without notification. Please also note that colours shown are illustrative only, as the printing process does not allow 100% accurate colours to be reproduced.